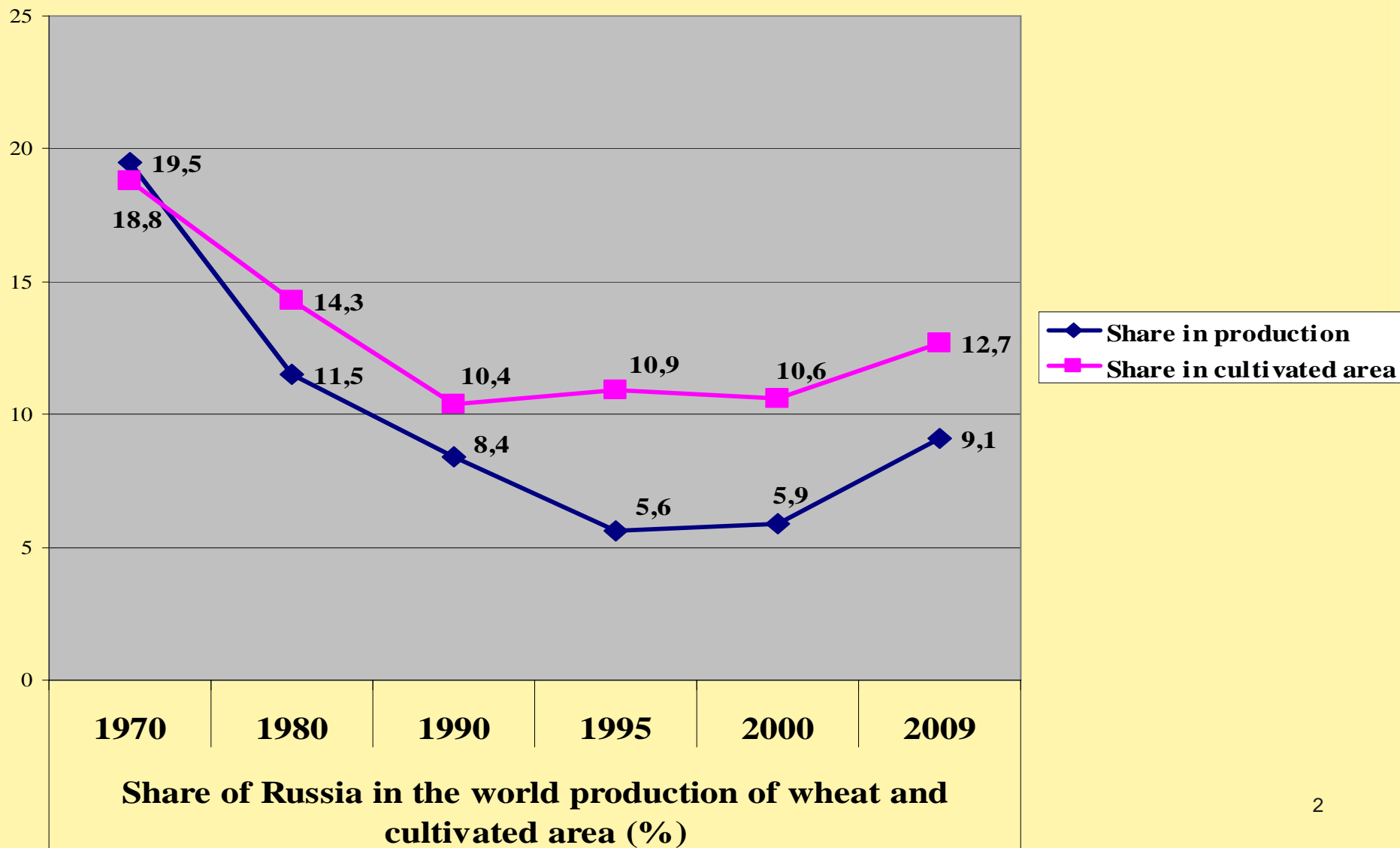


# **Status and perspectives of wheat production in Russian Federation**

*Prof. Sergey Kiselev,  
Lomonosov Moscow State University*

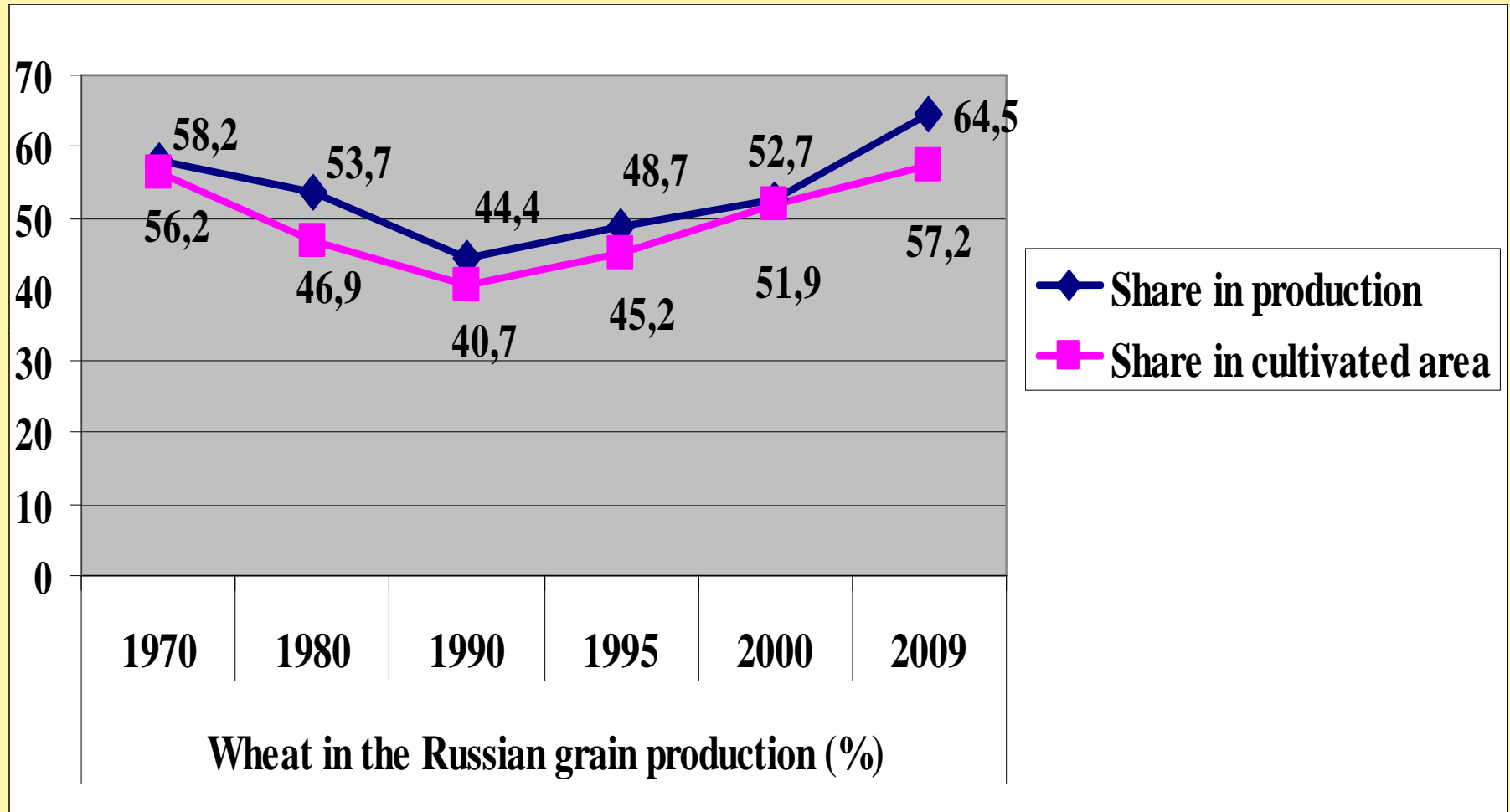


# The place of Russia in the wheat world



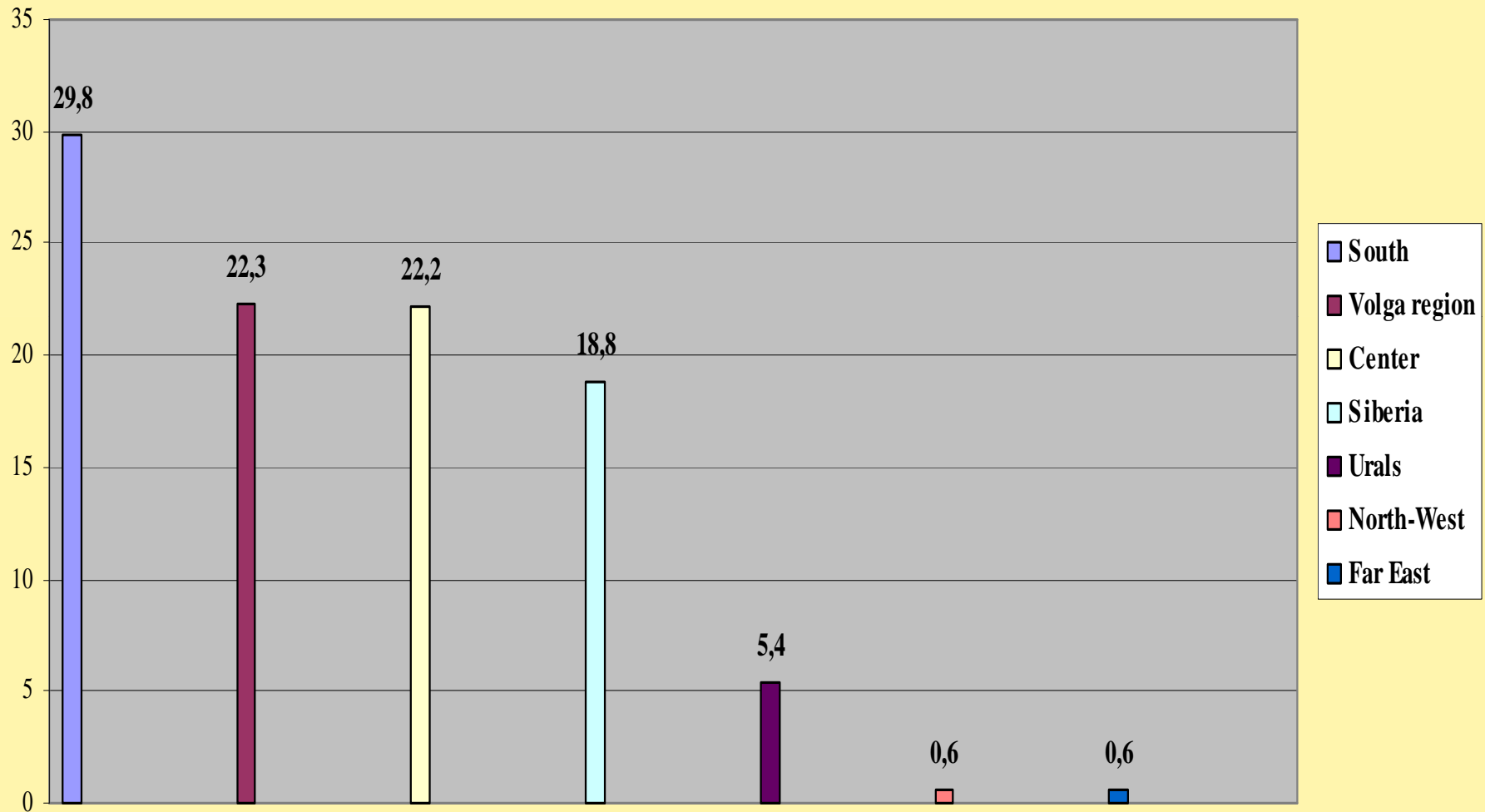


# The place of wheat in Russian grain production



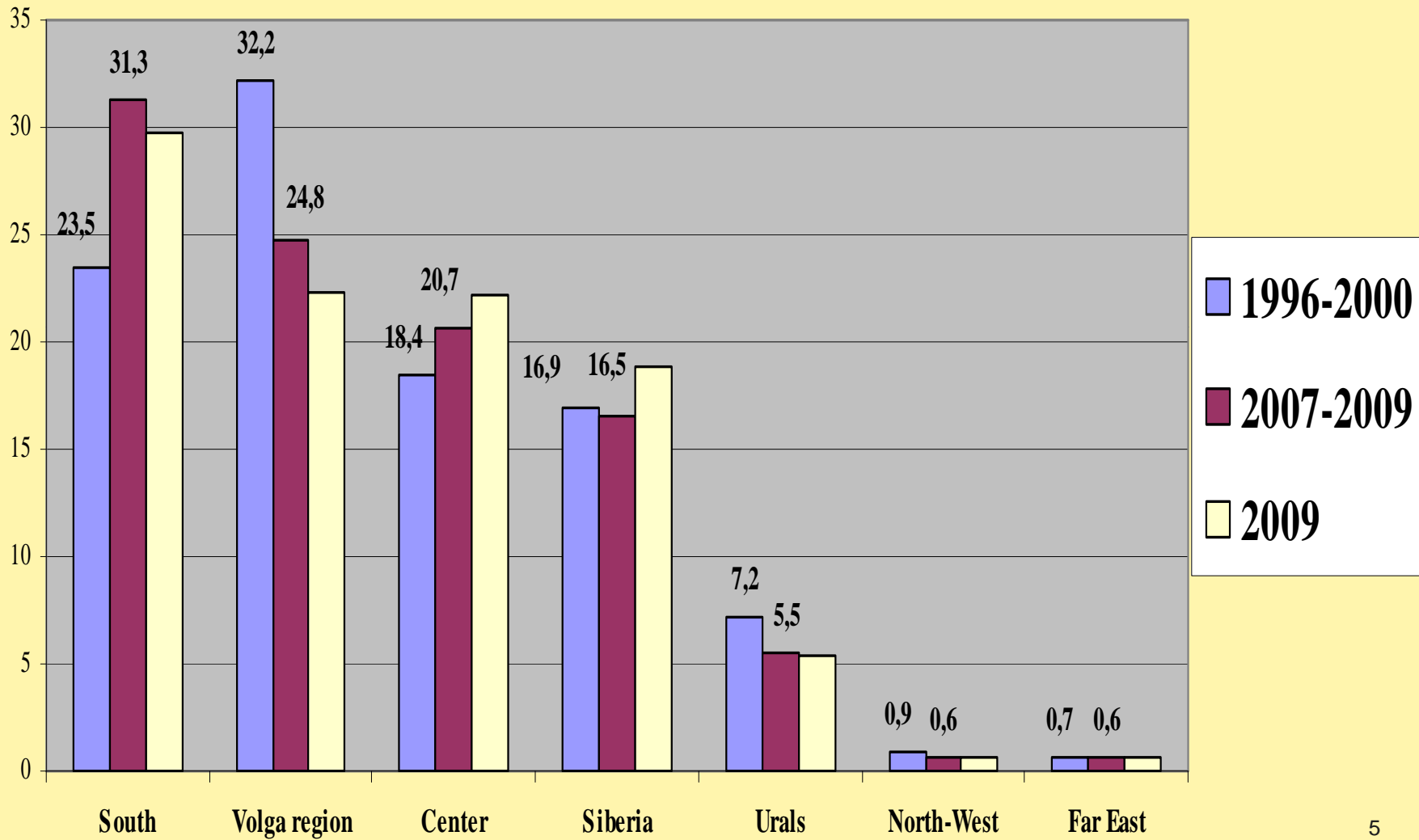


# The place of different regions in wheat production



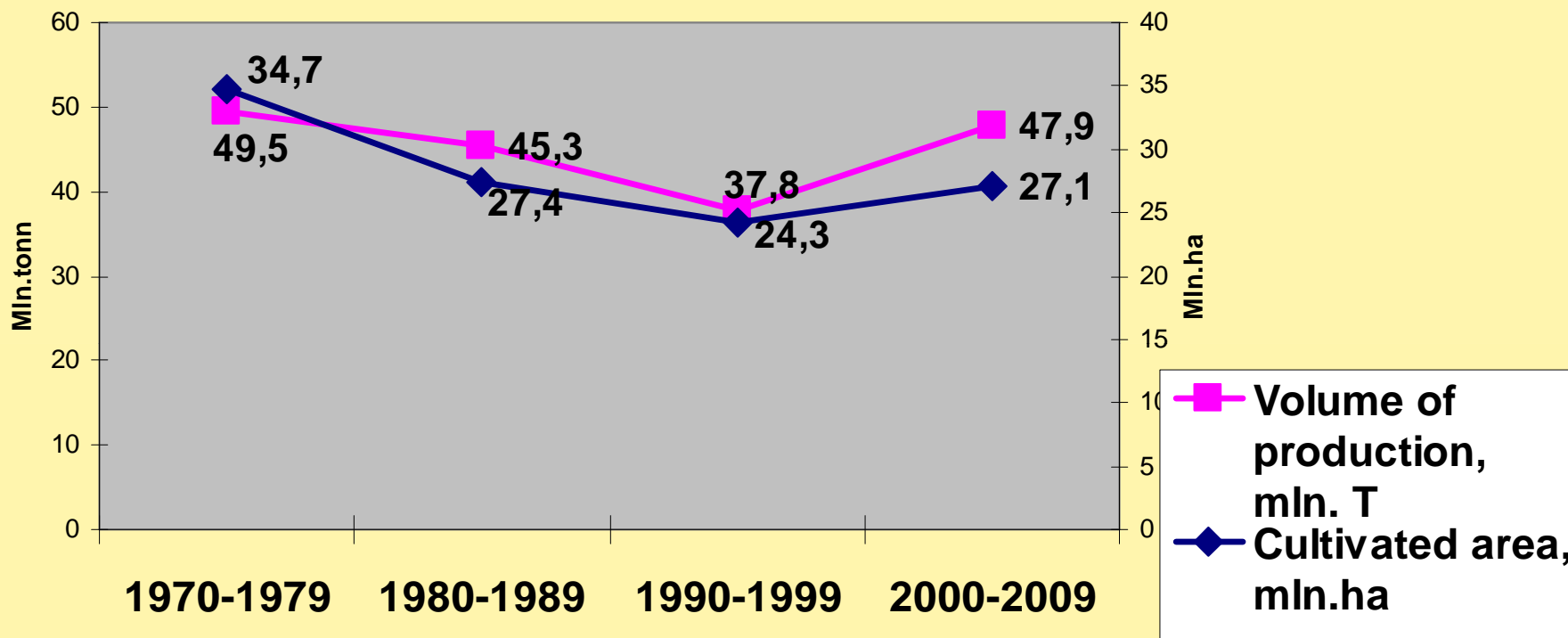


# Major trends: regional shifts





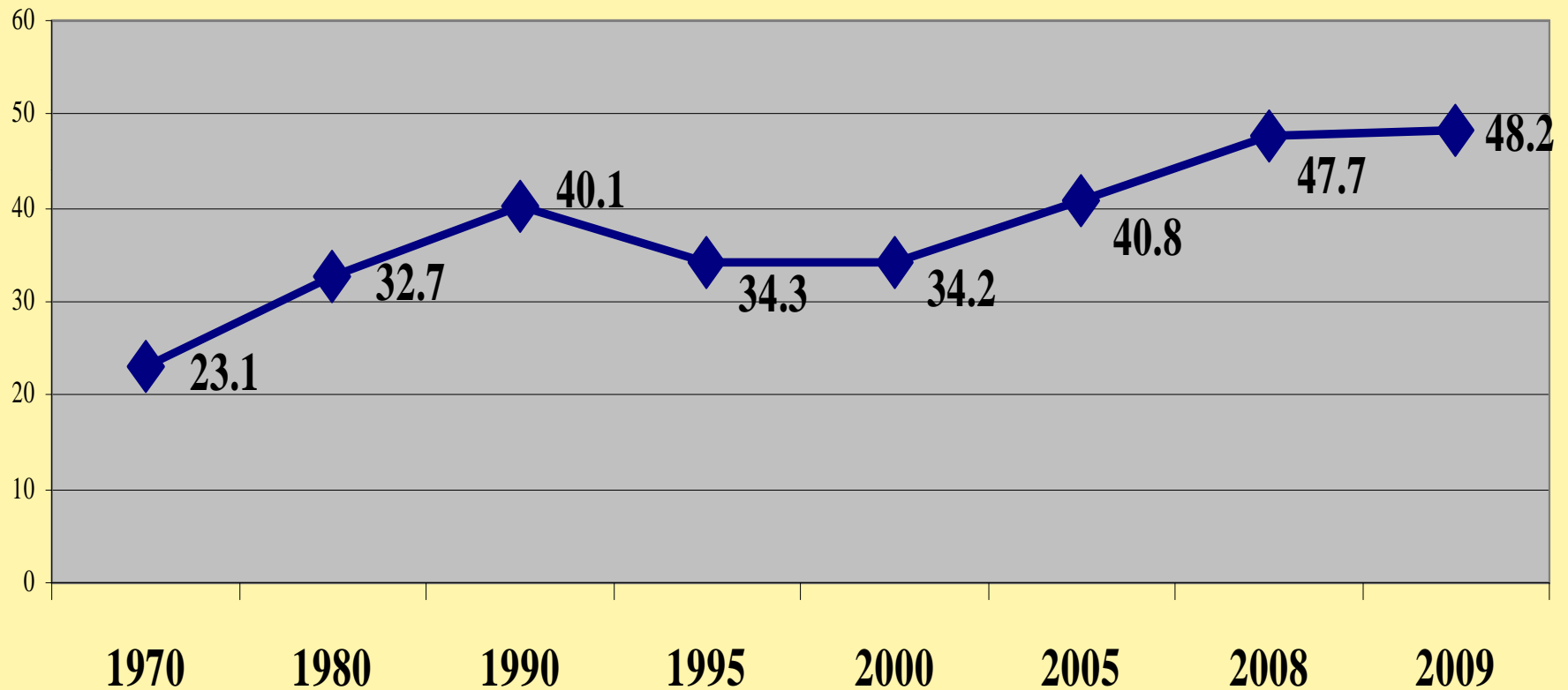
## Major trends: production and cultivated area of wheat





# Major trends: winter & spring wheat

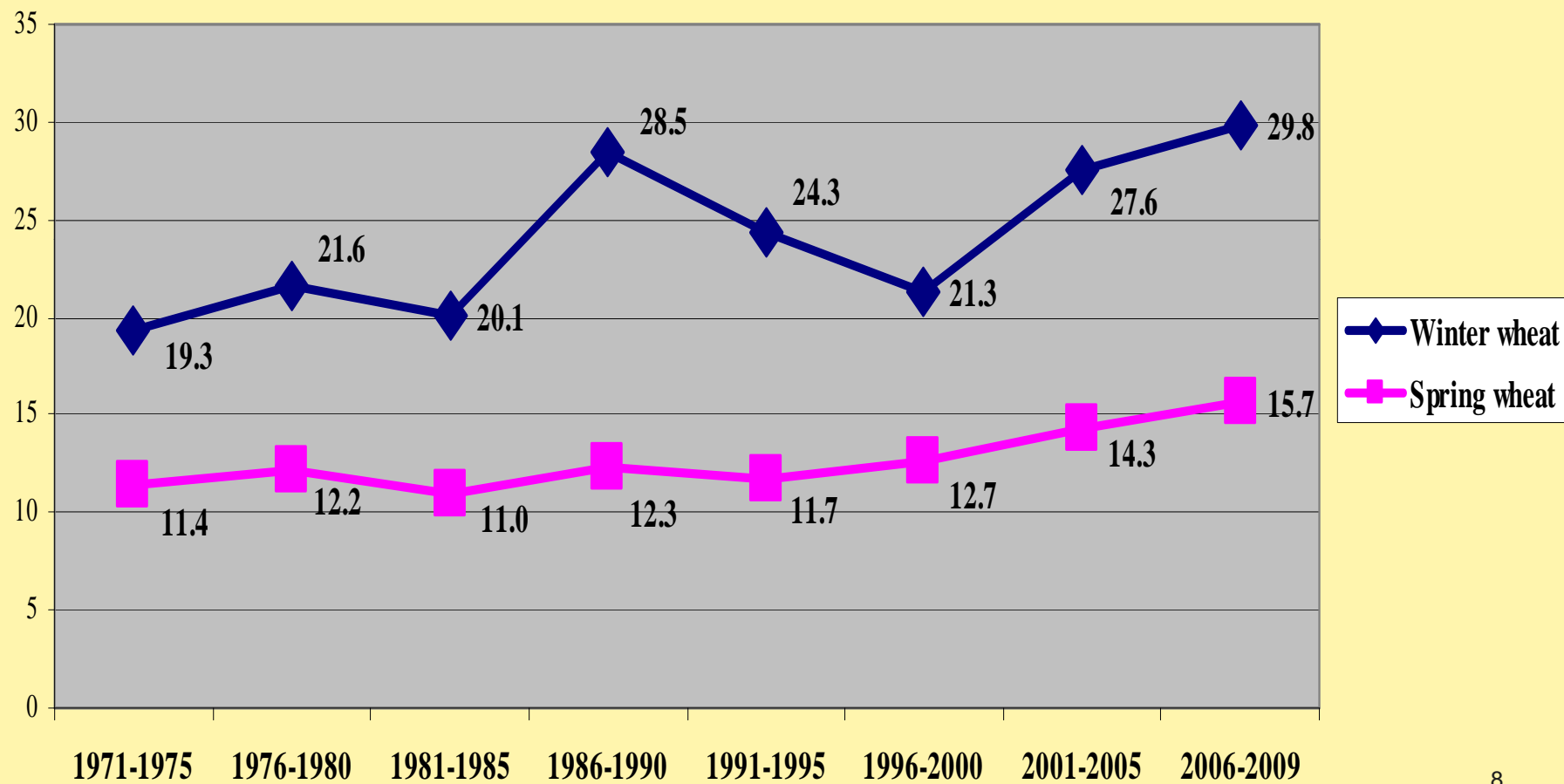
Share of winter wheat in cultivated area of wheat, %





# Major trends: yield

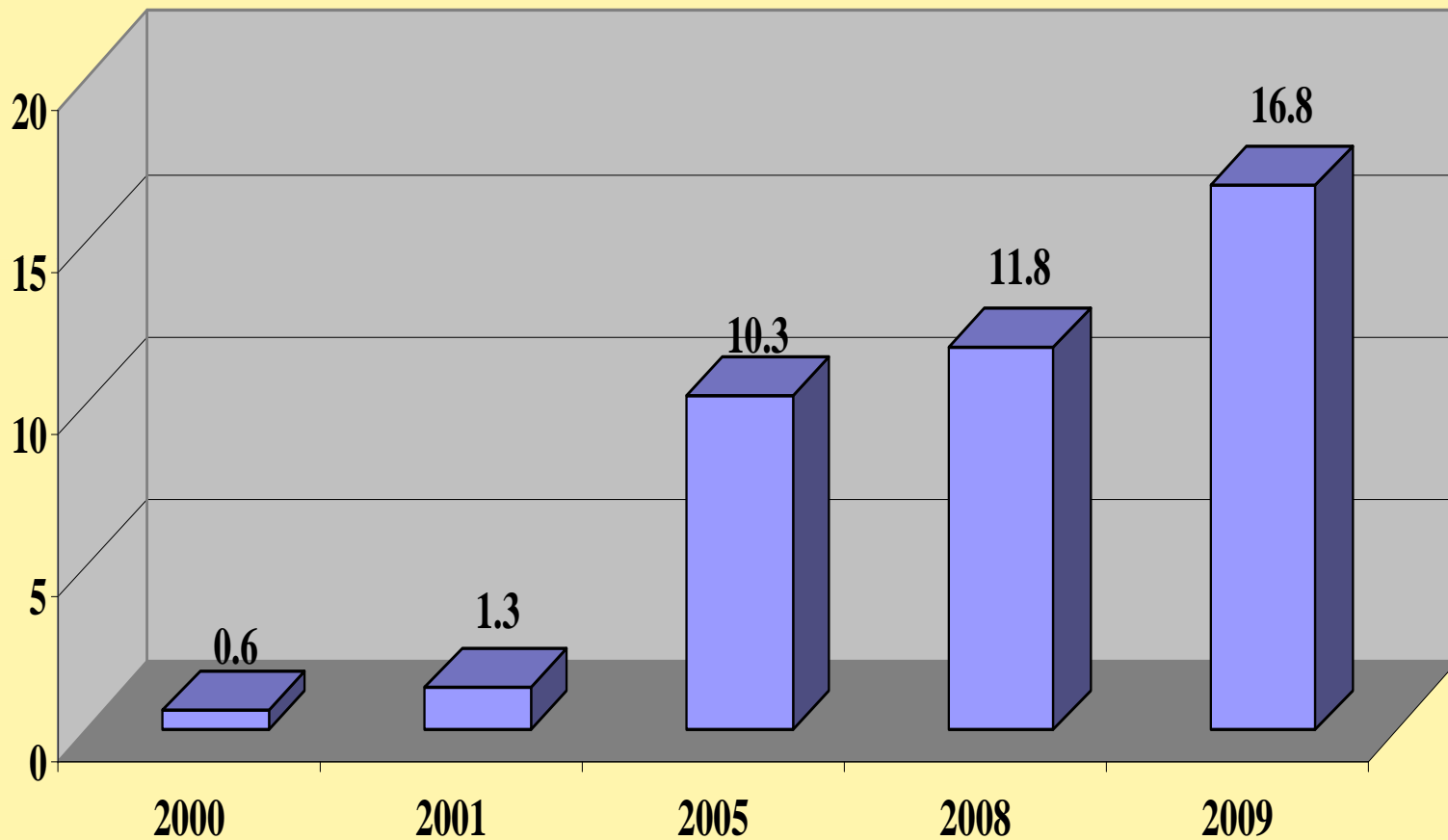
Yield of winter and spring wheat in Russia





# Trends in export of wheat

Wheat export, mln.tonn





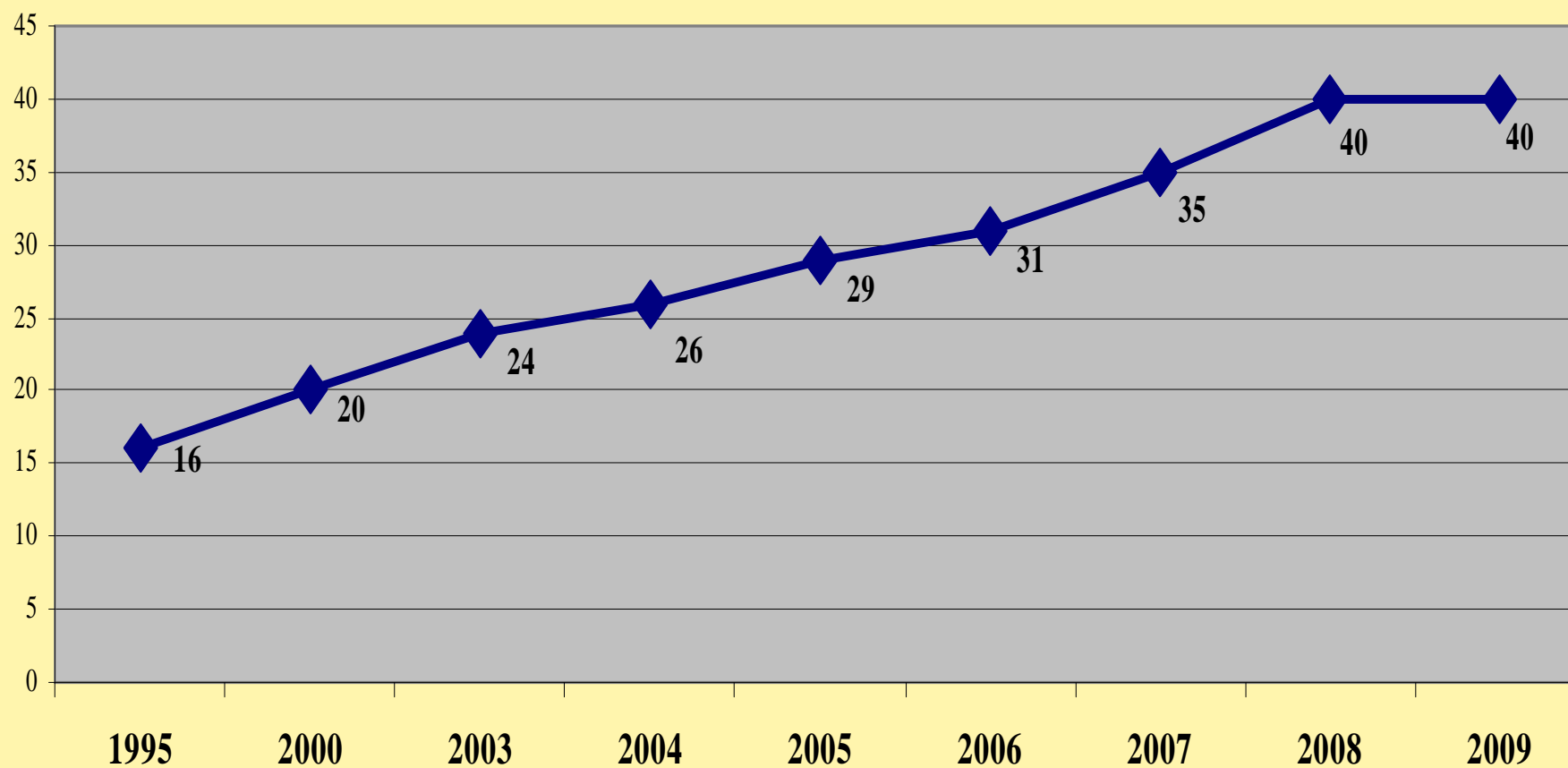
## **Major importers of Russian wheat**

- **Far abroad – Egypt (last years about 3 mln.tonn (Middle East, South Europe)**
- **CIS – Azerbaidjan (last years about 1mln.tonn)**



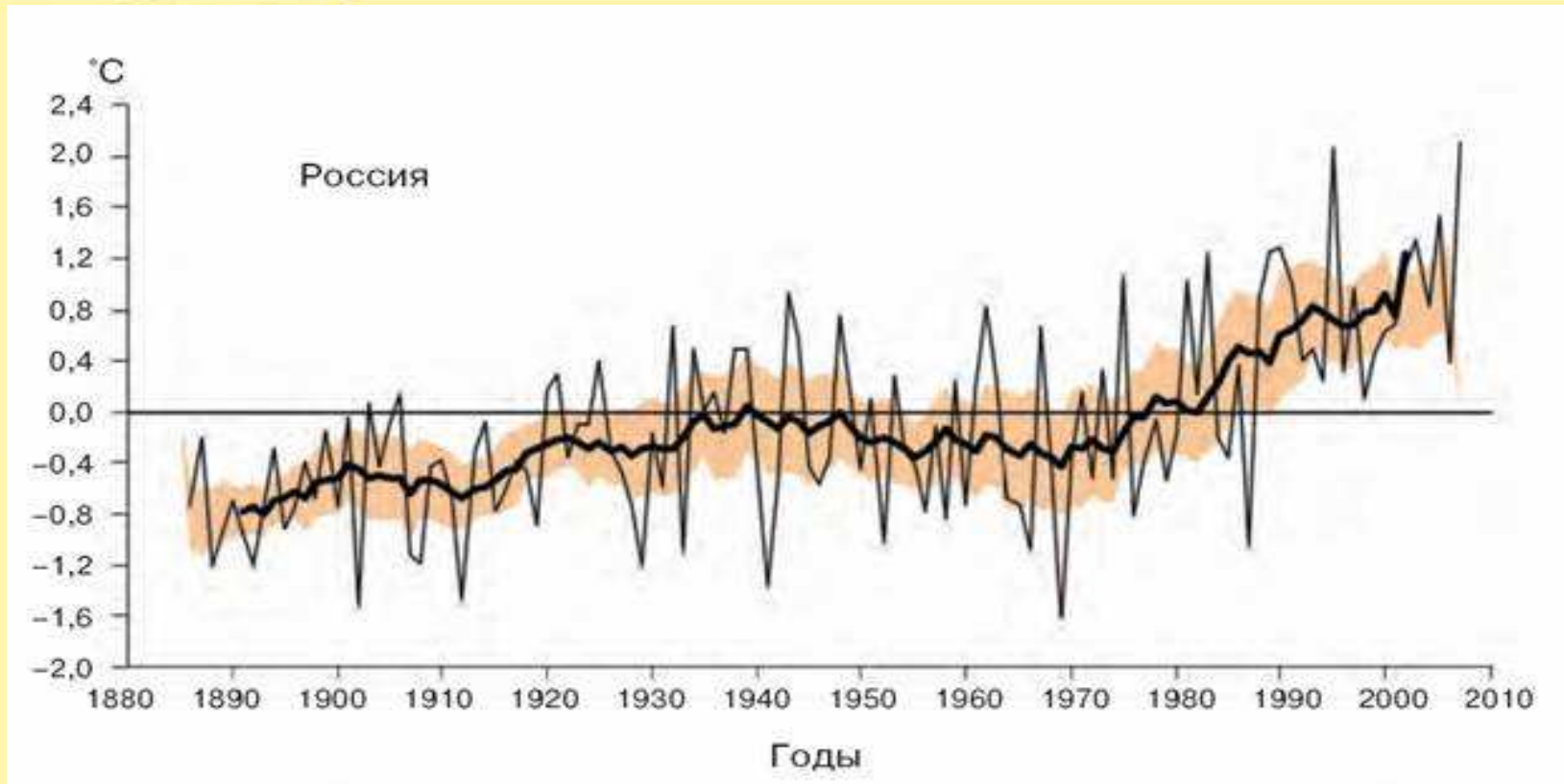
# Mineral fertilisers and grain

Fertilisers for grains (except corn), kg/ha





# Climate and wheat in Russia



- **Temperature increased in 1975-2006 on 1,33° C**
- **$\Sigma$  precipitation increased on 7,2 mm/10 years**
- **No increase in dryness index for major ag. areas**



## **Current situation in Russia**

- **Cultivated area of spring wheat is going to be less due to weather conditions**
- **Conditions of winter wheat is worse than last year**
- **Cultivated area of winter wheat is going to be less in comparison of last year**
- **Forecast – wheat production will be less than on 2009**



# **Short-term perspectives**

- **Stabilisation of yield and volume of production**



# **Major factors for short-term trend**

- **Price situation**
- **Large stocks**
- **Low demand**
- **Economic crisis**



# **Long-term perspectives**

- **Growth of cultivated area**
- **Growth of yield**
- **Increasing production**



## **Major factors for long-term trends**

- **Sound economic situation in agriculture**
- **Growth of investments**
- **Increasing of cultivated area**
- **Improving quality of seeds (about 20% nongrade or nonstandard at the moment)**
- **Fertilisers**
- **Technologies**